

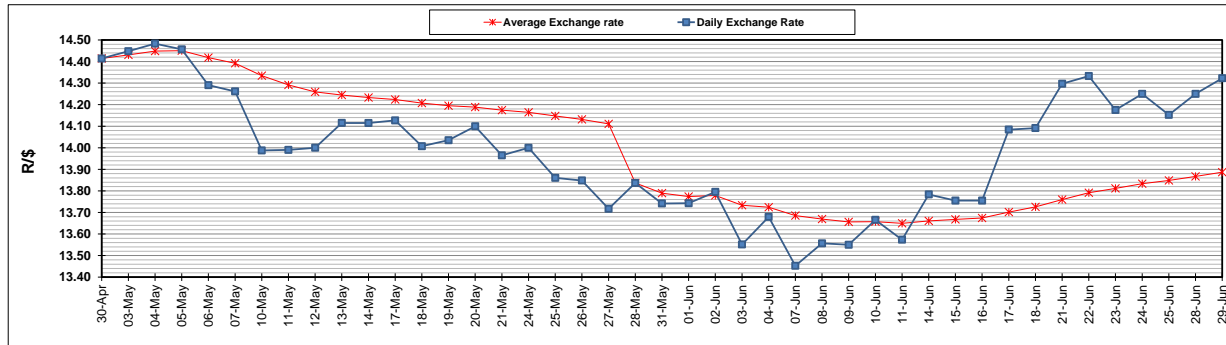
	PETROL 95 ULP	PETROL 93 ULP & LRP	DIESEL 0.05%	DIESEL 0.005%	ILL. PAR.
GAUTENG PUMP PRICE (SA c/l) AS FROM 02/06/2021	1,713.000	1,691.000	-	-	-
WHOLESALE PRICE (SA c/l) AS FROM 02/06/2021	-	-	1,466.620	1,471.020	877.488
SINGLE NATIONAL MAXIMUM RETAIL PRICE	-	-	-	-	1,102.000
BASIC FUEL PRICE - 29/06/2021 (SA c/l)	790.706	780.471	750.177	753.858	727.155
PRESS RELEASE CONTRIBUTION TO BFP 02/06/2021 - 29/06/2021 (SA c/l)	717.170	705.170	679.630	684.030	664.128
UNIT OVER/(UNDER) RECOVERY - 29/06/2021 (SA c/l)	(73.536)	(75.301)	(70.547)	(69.828)	(63.027)
AVERAGE BASIC FUEL PRICE 28/05/2021 - 29/06/2021	740.160	731.525	716.722	720.256	695.067
AVERAGE UNIT OVER/(UNDER) RECOVERY 28/05/2021 - 29/06/2021	(21.686)	(25.051)	(39.701)	(38.965)	(33.548)

ANALYSIS MOVEMENT OF AVERAGE OVER/(UNDER) RECOVERY

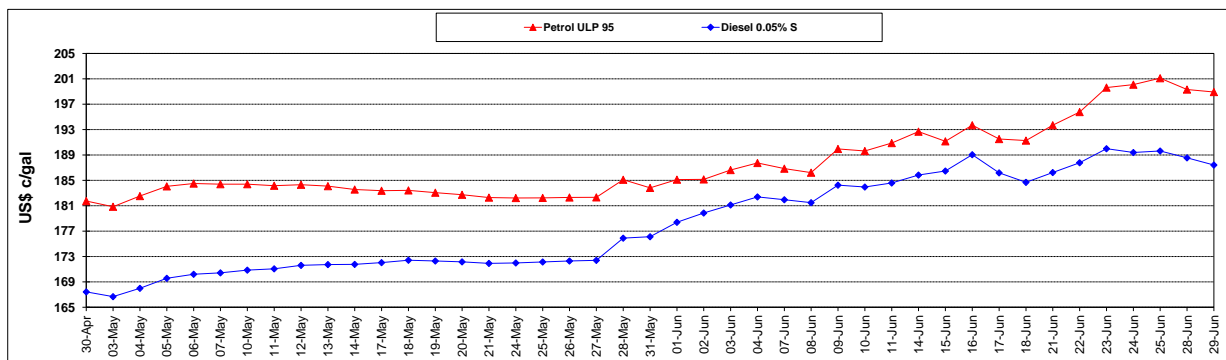
	PETROL 95	PETROL 93	DIESEL 0.05%	DIESEL 0.005%	ILL. PAR.
- MOVEMENT IN INTERNATIONAL PRODUCT PRICES	(33.641)	(36.867)	(51.278)	(50.599)	(44.775)
- MOVEMENT IN EXCHANGE RATE	11.955	11.816	11.577	11.634	11.227
AVERAGE UNIT OVER/(UNDER) RECOVERY 28/05/2021 - 29/06/2021	(21.686)	(25.051)	(39.701)	(38.965)	(33.548)

R/\$ EXCHANGE RATE - (R/\$14.3225- 29/06/2021)

EXCHANGE RATE USED IN BASIC FUEL PRICE



INTERNATIONAL PRODUCT PRICES OF BASKET USED IN BASIC FUEL PRICE



BASIC FUEL PRICE IN SA CENTS PER LITRE

